

# Cluster study:

from quantity to quality

Jolita Razumienė  
InoLink Project Manager



InoLink



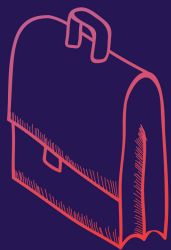
mita



LIETUVOS  
INOVACIJŲ  
CENTRAS



Kuriame  
Lietuvos ateitį  
2014–2020 metų  
Europos Sąjungos  
fondų investicijų  
veiksmų programa



**411**  
INITIATIVES



**38**  
CLUSTER MEMBERS  
PRODUCTS



**17**  
NEW INTERNATIONAL  
MEMBERS



**237**  
MTEPI ACTIVITIES

**265**  
NEW INTERNATIONAL  
PARTNERS



Click to add text



**199**  
NEW MEMBERS



**8**  
BRONZE  
LABEL



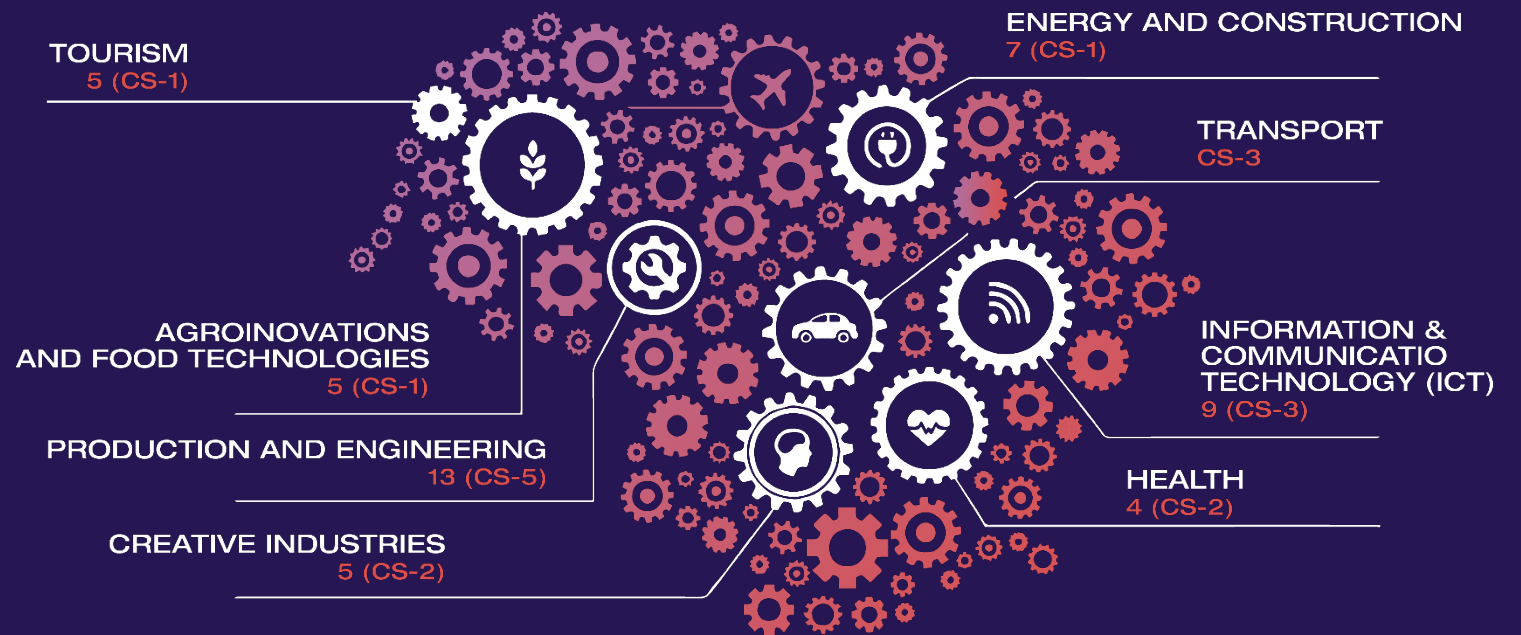
**1+3**  
METHODOLOGY AND  
STUDIES



**31**  
COMPANIES INVOLVED IN  
CLUSTERS OPERATING ABROAD

# Clusters in Lithuania: Factheet 2016 VS 2020

- Number of clusters: 64 VS 48
- Size of a clusters increased by 30%
- International members of clusters 20% vs 32,1%
- Cross-sectoral clusters: 34,4% VS 25%
- Most clusters operate in the fields of and Manufacturing & Engineering, Energy & Construction, ICT

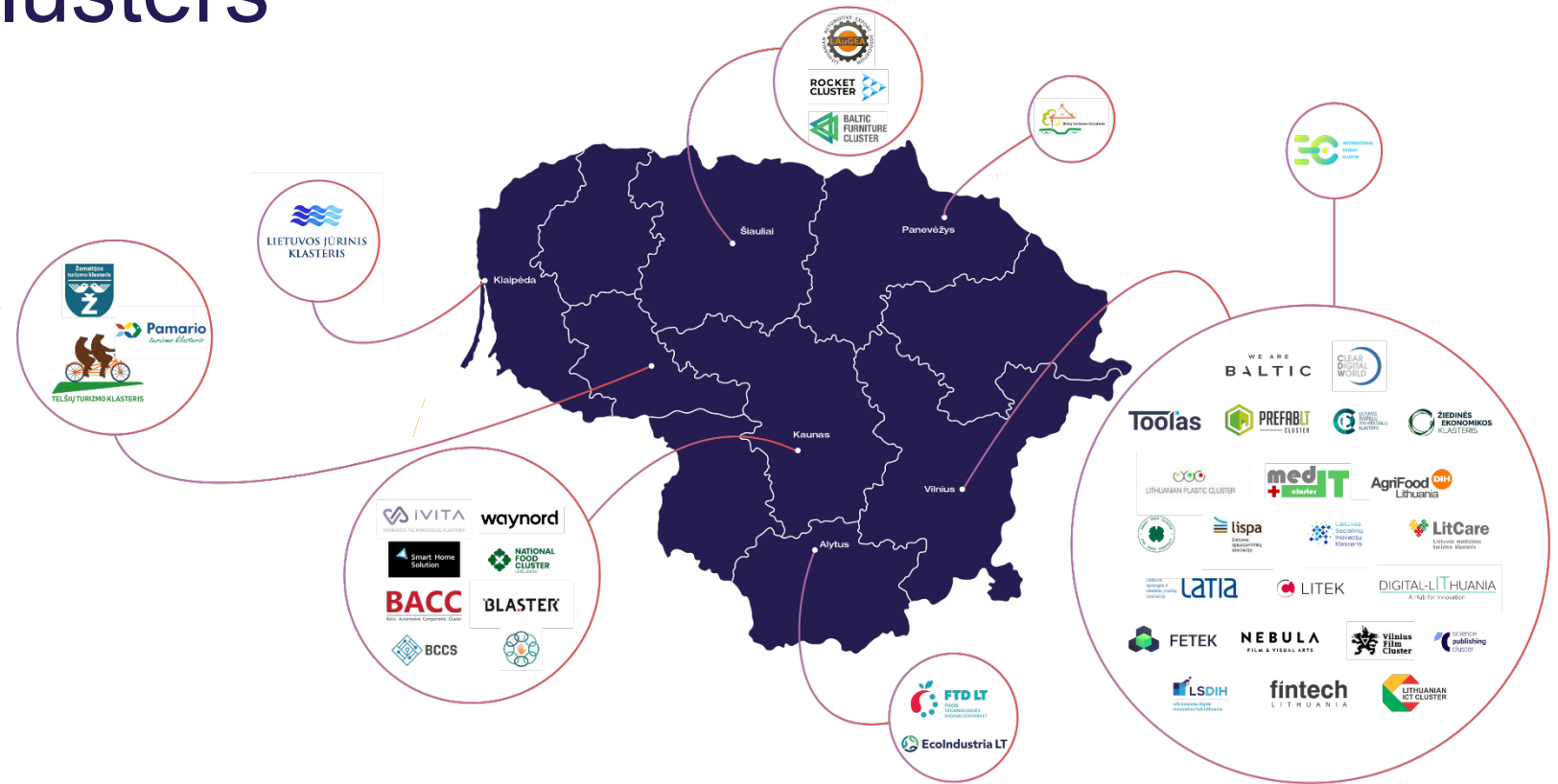


# Geography, maturity and infrastructure of clusters

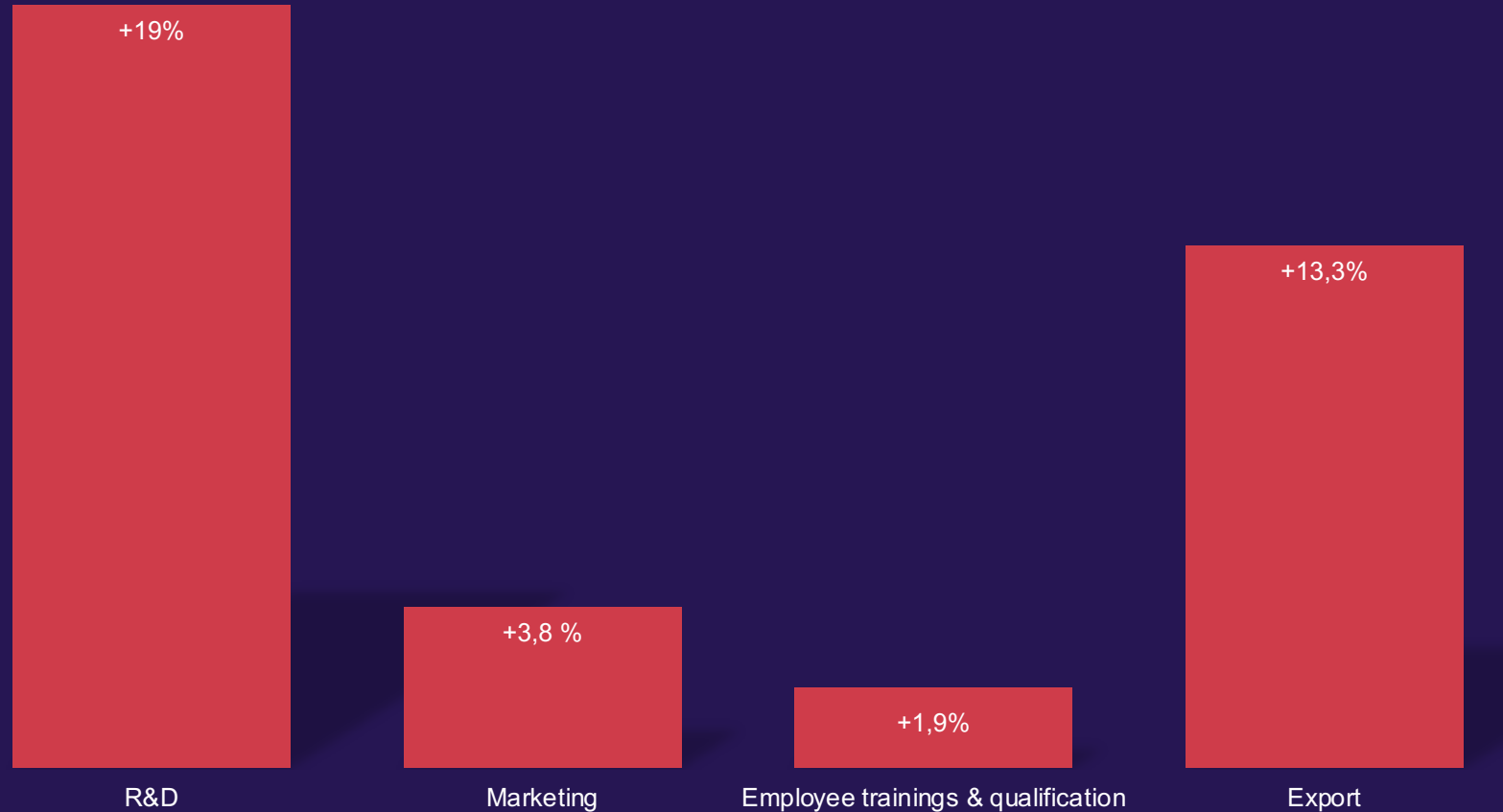
**Most active regions in clustering:**  
biggest cities Vilnius, Kaunas, Klaipėda  
46% VS 28%

**Clusters & maturity\*:**  
Clusters holding ESCA Bronze Label  
of Excellence: 10

**Shared infrastructure:**  
12% VS 46%



## Mutual activities 2020 vs 2016, change in percent



# 100% of Clusters Determined to Innovate

Clusters are planning R&D mostly in order to:

- respond to market changes
- Be competitive
- Implement strategy

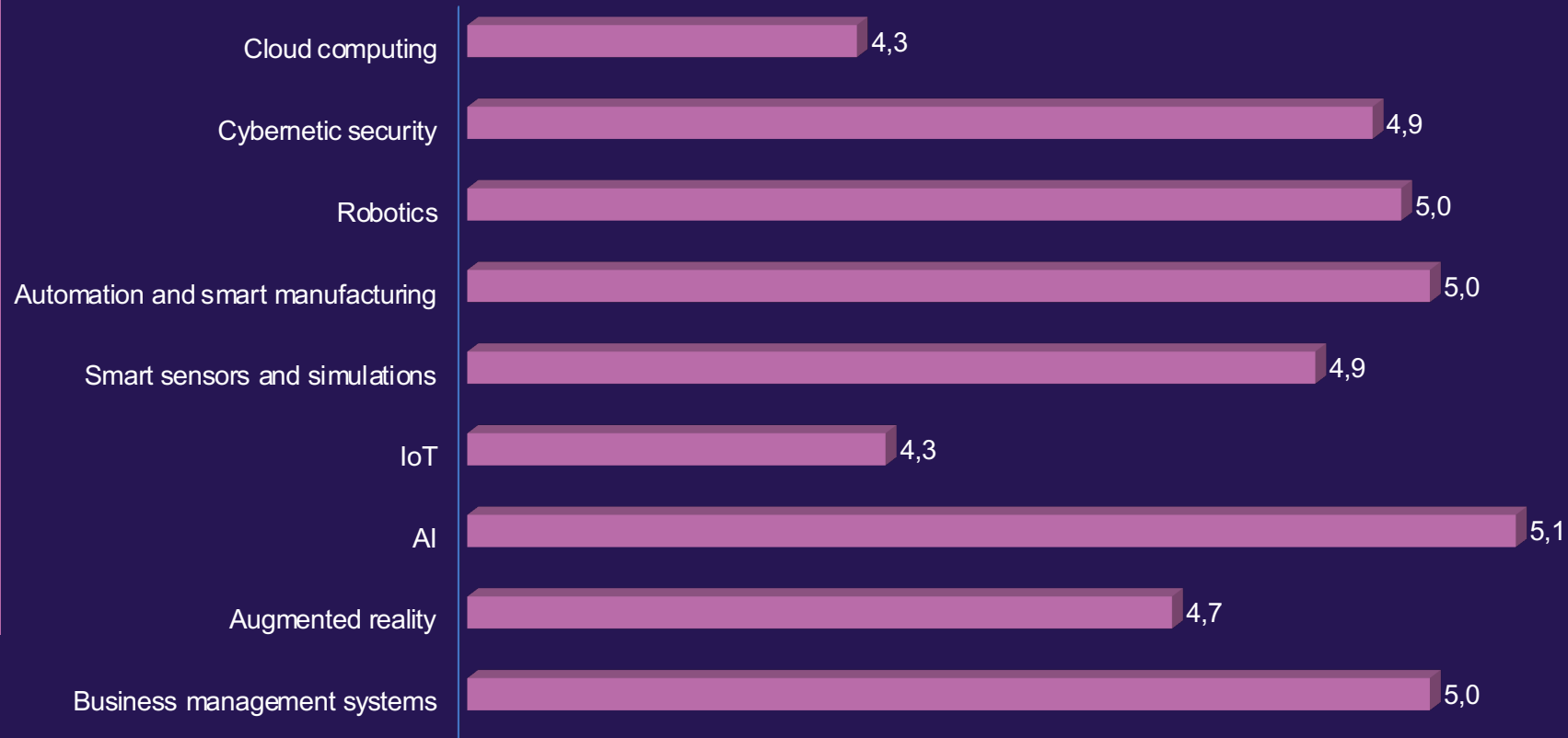
R&D in the past mostly contributed to:

- Increase in sales
- Ability to introduce new products/services to the market faster
- Growing loyalty from customers

# Digitalization in 5 years:

60% VS 93%

From clusters point of view:  
Which technologies and how will affect sectors?

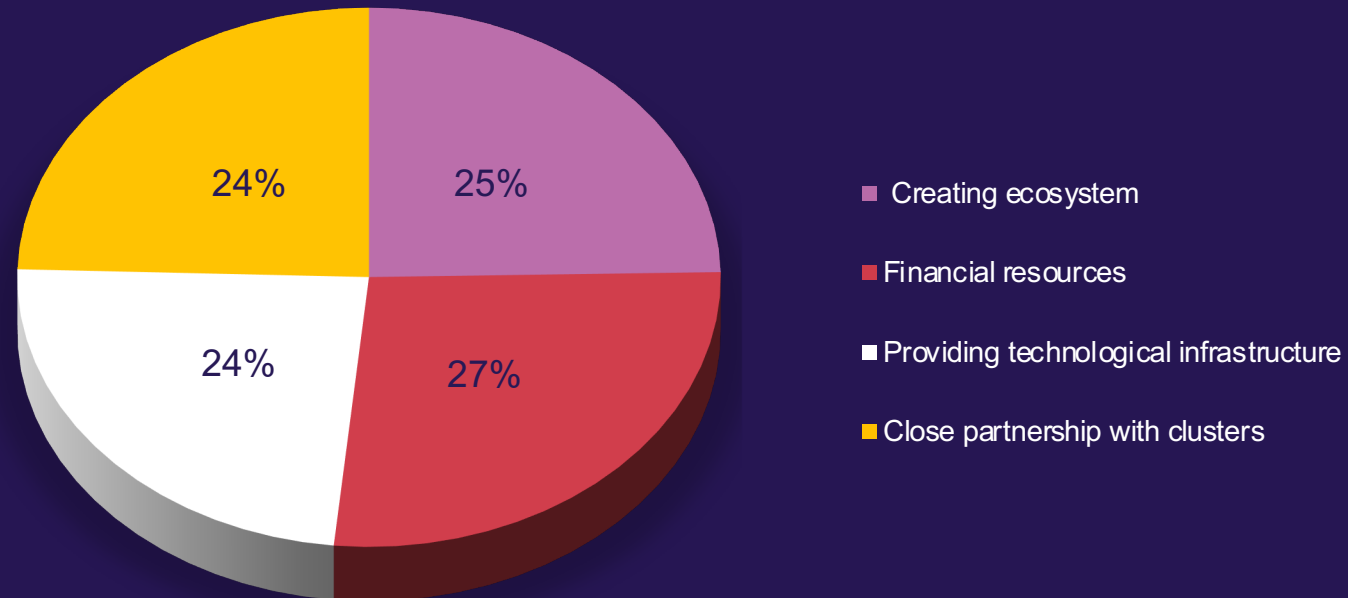


# What services would speed up digitalization in cluster?



# 90% clusters will be impacted by circular economy

Services increasing the efficiency of the implementation of circular economy

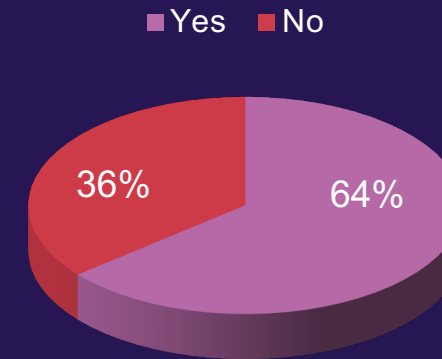
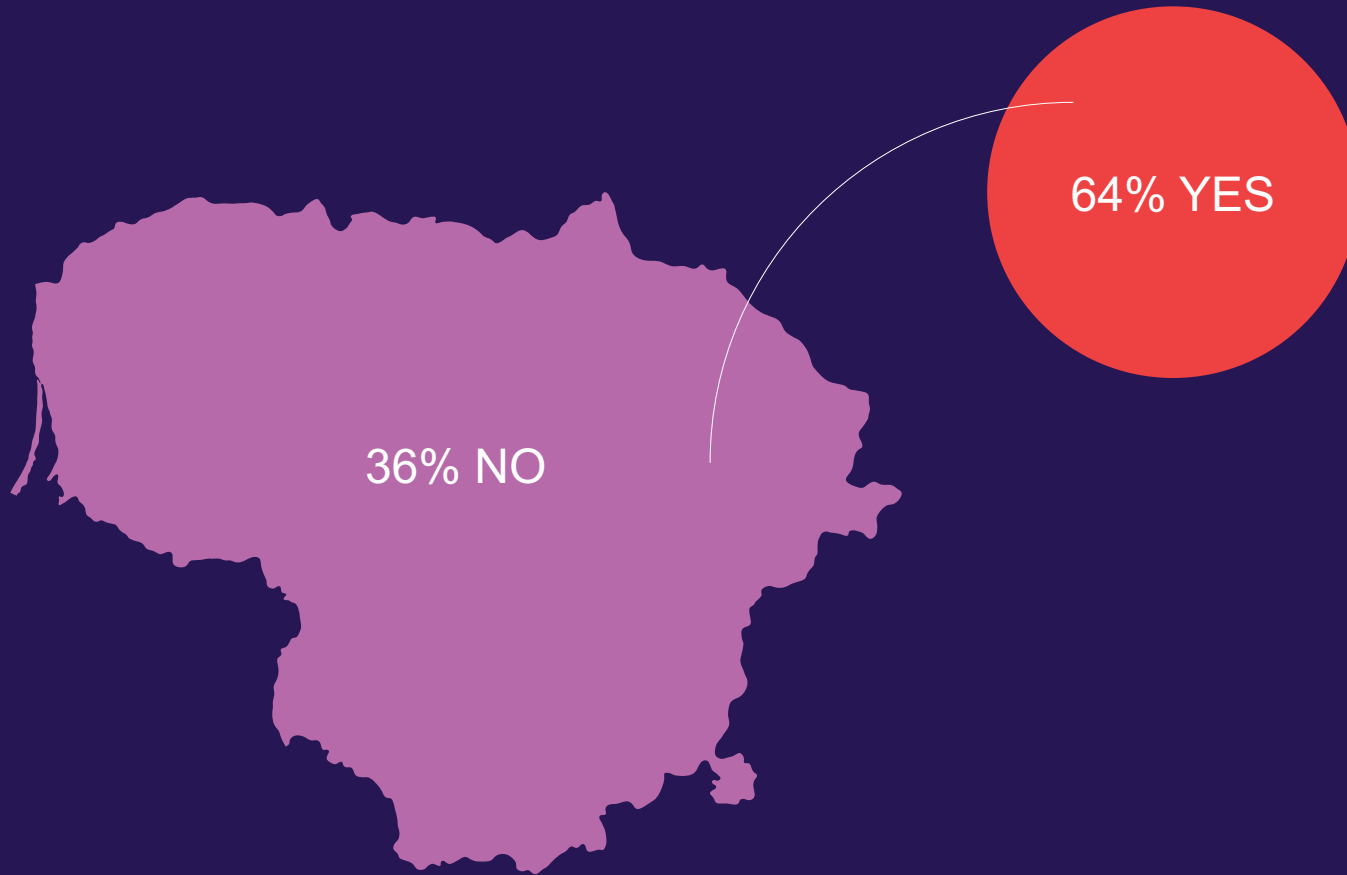


# Success stories

- Short supply chains: Namuk
- R&D value chain: LITEK
- COVID 19 related transformation: LAUGEA
- Digitalization: AgriFood



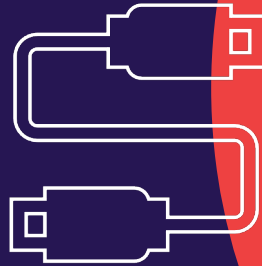
# International cooperation



Is cluster a member of any international networks and/or contribute to any international networks?

# Towards quality and greater impact

- Trend: quantity to quality
- Impact due to changes in shared infrastructure, membership, R&D



Therefore clusters:

- Powerful source of innovation
- Important role in twin transformation
- Help overcoming crisis and new challenges

# Thank you!

*Follow us [www.mita.lt](http://www.mita.lt)!*

*Information about clusters [www.klaster.lt](http://www.klaster.lt)*

*Jolita Razumienė, InoLink project manager*

*[Jolita.razumiene@mita.lt](mailto:Jolita.razumiene@mita.lt)*

*+370 604 78790*



InoLink



|mita



LIETUVOS  
INOVACIJŲ  
CENTRAS



Kuriame  
Lietuvos ateitį  
2014–2020 metų  
Europos Sąjungos  
fondų investicijų  
vėlesnės programa